

# RETROREFLECTIVE TAPES

## DATFLEX

DATFLEX

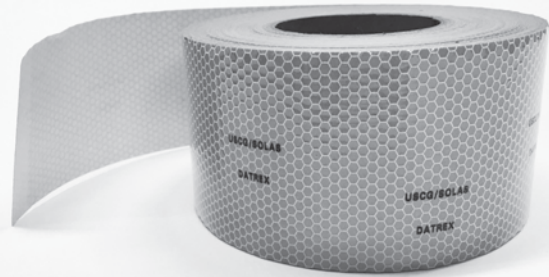
**TYPE** SOLAS Grade Retroreflective Material

### APPLICATIONS

**Indoor / outdoor** retroreflective tape for life saving appliances such as life boats, life rafts, lifejackets, and life rings.

### FEATURES

- DATFLEX retroreflective Tapes are designed to enhance visibility in nighttime or low light condition
- Approved, USCG/SOLAS/MED Type I and II
- Pressure sensitive adhesive or sew-on applications
- Meets SOLAS IMO Resolution A.658(16) for Type I and II applications



### SPECIFICATIONS

ITEM NO.	DX1020M	DX1040M	DX1010SM	DX103SM	DX104SM
<b>USE</b>	COMMERCIAL	COMMERCIAL	COMMERCIAL	COMMERCIAL	COMMERCIAL
<b>ATTACHMENT TYPE</b>	SELF ADHESIVE	SELF ADHESIVE	SEW-ON	SEW-ON	SEW-ON
<b>PERFORMANCE</b>	SOLAS	SOLAS	SOLAS	SOLAS	SOLAS
<b>WIDTH</b>	2" / 50 mm	4" / 100 mm	1" / 25 mm	3" / 76 mm	4" / 100 mm
<b>LENGTH</b>	50 yards / 45.7 m	50 yards / 45.7 m	50 yards / 45.7 m	50 yards / 45.7 m	50 yards / 45.7 m
<b>DAYTIME COLOR</b>	SILVER	SILVER	SILVER	SILVER	SILVER
<b>REFLECTIVE COLOR</b>	WHITE	WHITE	WHITE	WHITE	WHITE
<b>PRODUCT TYPE</b>	ROLL	ROLL	ROLL	ROLL	ROLL
<b>CERTIFICATION</b>	USCG/SOLAS/MED	USCG/SOLAS/MED	USCG/SOLAS/MED	USCG/SOLAS/MED	USCG/SOLAS/MED
<b>TYPE USE</b>	TYPE II	TYPE II	TYPE I	TYPE I	TYPE I

### APPROVAL/COMPLIANCE

U.S.C.G./SOLAS/MED , USCG Approval number 164.018/19/0 for Type I and II (indoor and outdoor use) in accordance with IMO Resolution A.658(16) for Type I and II applications.



DATREX